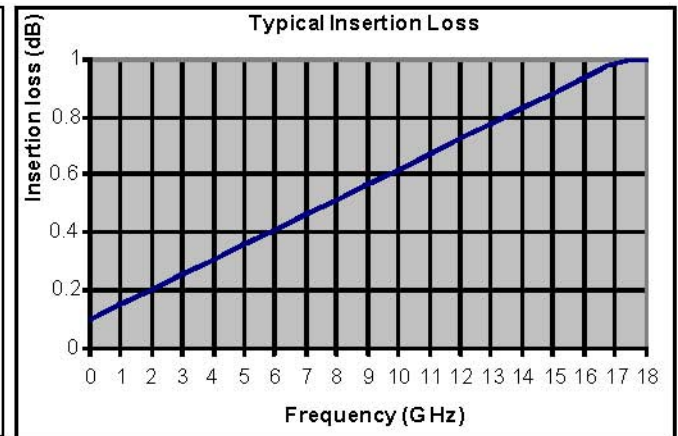
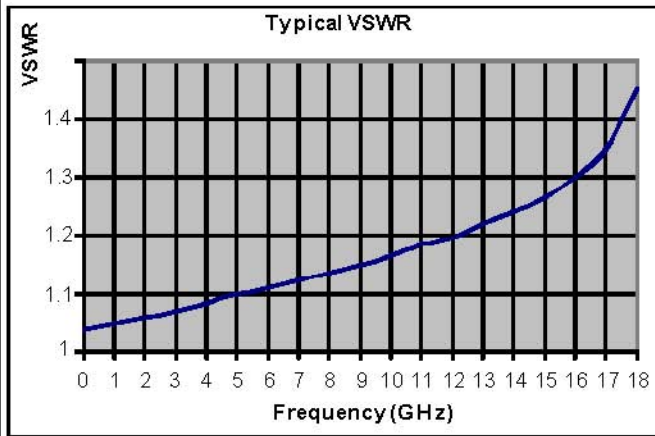


## Type N and TNC Coaxial Rotary Joint



Space Machine custom fabricates Type-N and TNC coaxial rotary joints to meet your specific needs. Our rotary joints have a long life and are very durable. Please see graphs for typical insertion loss and VSWR plots. Frequency range is from DC to 18.0 GHz. Peak power is 20 kW @ 1 GHz, 500 W average for Type-N rotary joint. Peak power is 6 kW @ 1 GHz, 100 W average for TNC. Starting torque is 8 oz-in for both. See next page for standard dimensions.

### Ordering Information:

**Type-N coaxial rotary joint,  
Type-N female, Type-N male, silver plated,  
Paint Space Machine Grey.**

**Example part number:**

<u>CRJ</u>	<u>-cnt</u>	<u>-cnt</u>	<u>-p</u>	<u>f</u>
CRJ	-NF	-NM	-S	P

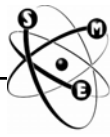
Series (CRJ):

Connector (-cnt): NF - Female SMA, NM - Male SMA, TF - Female TNC, TM - Male TNC

Connector (-cnt): NF - Female SMA, NM - Male SMA, TF - Female TNC, TM - Male TNC

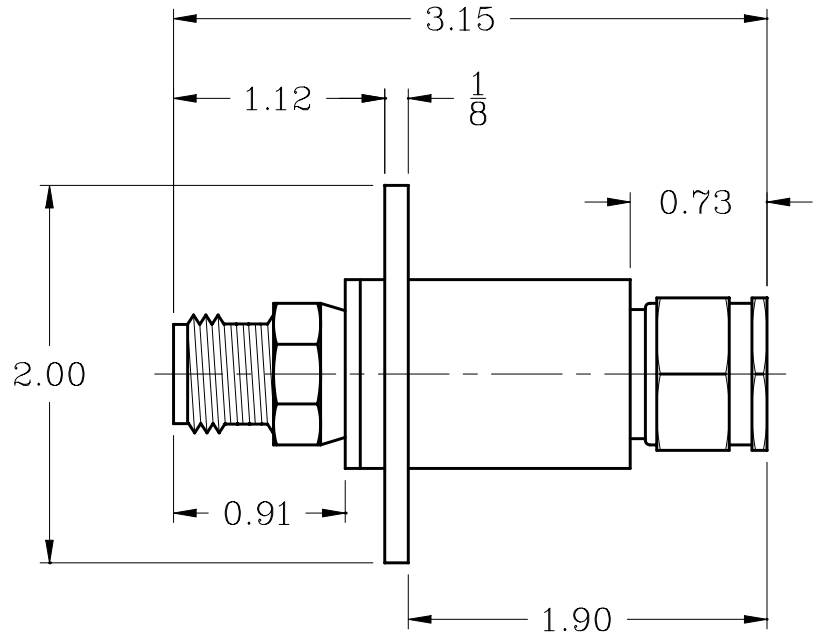
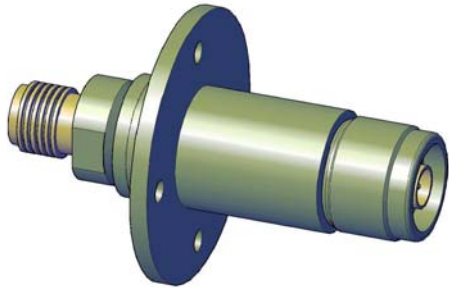
Plating (-p): C - Chromate, S - Silver, G - Gold, O - Other, N - None

Finish (f): P - Paint Space Machine Gray, N - None, O - Other

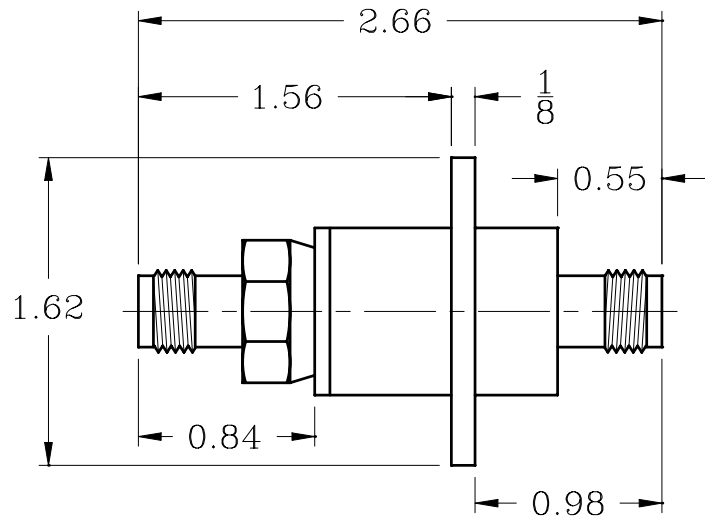
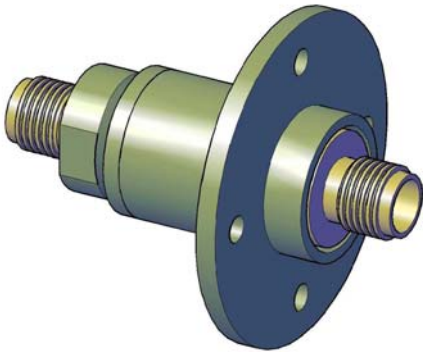


# Space Machine & Engineering CORP.

## Type N and TNC Dimensions



Part Number: CRJ-NF-NM-pf



Part Number: CRJ-TF-TF-pf