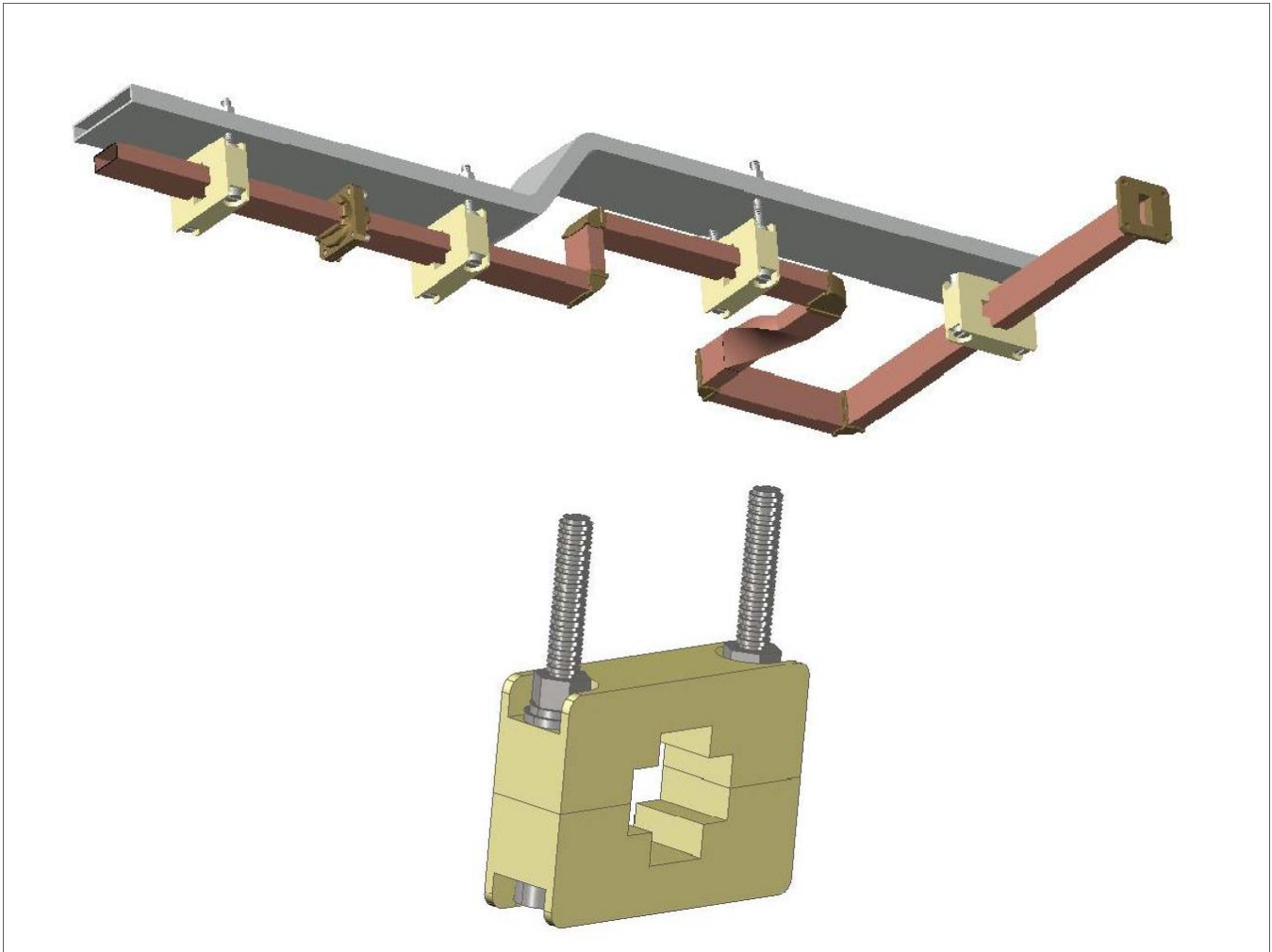


Waveguide Standoffs



Space Machine & Engineering offers a standard product line of waveguide standoffs with hardware for all waveguide sizes. These waveguide clamps are used to hold waveguides in either “E” or “H” plane and furnished with stainless steel mounting hardware.

Additional sizes, including Double Ridge Waveguides, are available upon request.

Ordering Information:

**Waveguide Standoff, WR90
With Hardware**

Example part number:

<u>WSO</u>	<u>wr</u>
WSO	90

Series (WSO):

Waveguide Size (wr): WR28 - WR284